

Welcome to the AccessibilityOnline Webinar Series



A collaborative program between the
ADA National Network and the
U.S. Access Board



The Session is Scheduled to begin at 2:30pm Eastern Time
We will be testing sound quality periodically

Audio and Visual are provided through the on-line webinar system. This session is closed captioned. Individuals may also listen via telephone by dialing 1-712-432-3100 code 930098 (This is **not** a Toll Free number)

The content and materials of this training are property of the US Access Board and the Great Lakes ADA Center and cannot be used and/or distributed without permission. This program is funded through a contract agreement with the U.S. Access Board. For permission to use training content or obtain copies of materials used as part of this program please contact us by email at adata@adagreatlakes.org or toll free (877)232-1990 (V/TTY)

www.AccessibilityOnline.org

1



Listening to the Webinar



- The audio for today's webinar is being broadcast through your computer. Please make sure your speakers are turned on or your headphones are plugged in.
- You can control the audio broadcast via the Audio & Video panel. You can adjust the sound by "sliding" the sound bar left or right.
- If you are having sound quality problems check your audio controls by going through the Audio Wizard which is accessed by selecting the microphone icon on the Audio & Video panel



2



Listening to the Webinar, *continued*

If you do not have sound capabilities on your computer or prefer to listen by phone, dial:

1-712-432-3100

Pass Code:
930098

This is **not** a Toll Free number

3



Listening to the Webinar, *continued*

MOBILE Users (iPhone, iPad, or Android device and Kindle Fire HD)

Individuals may listen** to the session using the Blackboard Collaborate Mobile App (Available Free from the Apple Store, Google Play or Amazon)




**Closed Captioning is not visible via the Mobile App and limited accessibility for screen reader/Voiceover users

4



Captioning

- Real-time captioning is provided during this webinar.
- The caption screen can be accessed by choosing the  icon in the Audio & Video panel. ↓



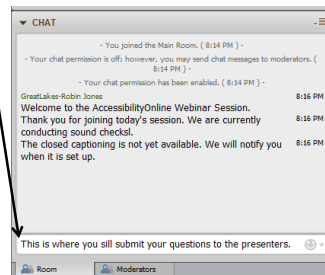
- Once selected you will have the option to resize the captioning window, change the font size and save the transcript.

5



Submitting Questions

- **You may type and submit questions in the Chat Area Text Box or press Control-M and enter text in the Chat Area**
- **If you are connected via a mobile device you may submit questions in the chat area within the App**
- **If you are listening by phone and not logged in to the webinar, you may ask questions by emailing them to webinars@accessibilityonline.org**



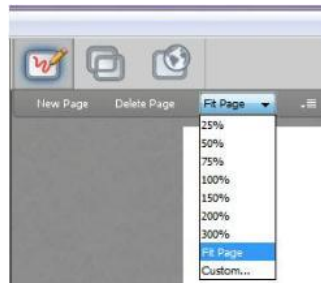
Please note: This webinar is being recorded and can be accessed on the AccessibilityOnline website at www.accessibilityonline.org/Archives within 24 hours after the conclusion of the session.

6



Customize Your View


- Resize the Whiteboard where the Presentation slides are shown to make it smaller or larger by choosing from the drop down menu located above and to the left of the whiteboard. The default is “fit page”



7



Customize Your View *continued*

- Resize/Reposition the Chat, Participant and Audio & Video panels by “detaching” and using your mouse to reposition or “stretch/shrink”. Each panel may be detached using the  icon in the upper right corner of each panel.

8

Setting Preferences

- Depending on your system settings you may receive visual and audible notifications when individuals enter/leave the webinar room or when other actions are taken by participants. This can be distracting.
- To turn off notifications (audible/visual)
 - Select “Edit” from the tool bar at the top of your screen
 - From the drop down menu select “Preferences”
 - Scroll down to “General”
 - select “Audible Notifications” Uncheck anything you don’t want to receive and “apply”
 - Select “Visual Notifications” Uncheck anything you don’t want to receive and “apply”
 - For Screen Reader User – Set preferences through the setting options within the Activity Window (Ctrl+slash opens the activity window)

9



Technical Assistance



- If you experience any technical difficulties during the webinar:
 1. Send a private chat message to the host by double clicking “Great Lakes ADA” in the participant list. A tab titled “Great Lakes ADA” will appear in the chat panel. Type your comment in the text box and “enter” (Keyboard - F6, Arrow up or down to locate “Great Lakes ADA” and select to send a message); or
 2. Email webinars@accessibilityonline.org ; or
 3. Call 877-232-1990 (V/TTY)

10

Accessible Hospitals and Medical Care Facilities - “Advanced Session”

11

Presenters

U.S. Access Board



Earlene Sesker



Rex Pace

12

Session Agenda

- The Standards
- Scope
 - Covered Facilities
 - Employee Work Areas
 - Patient Sleeping Rooms
- Spaces and Elements
 - Accessible Routes
 - Parking
 - Entrances
 - Doors
 - Alarms
 - Facilities for Children's Use
 - Toilets
 - Sinks
 - Dispensers
 - Signs
 - TTYs
 - Audiology Sound Booths
 - Nurses' Work Stations/Service Counters/Chart Tables
- Proposed Standards for Accessible Medical Diagnostic Equipment

13

ADA & ABA Standards

ADA Standards:

- places of public accommodation
- commercial facilities
- state & local government facilities



Architectural Barriers Act (ABA) Standards:

- Federally funded facilities

14

ADA Standards for Accessible Design



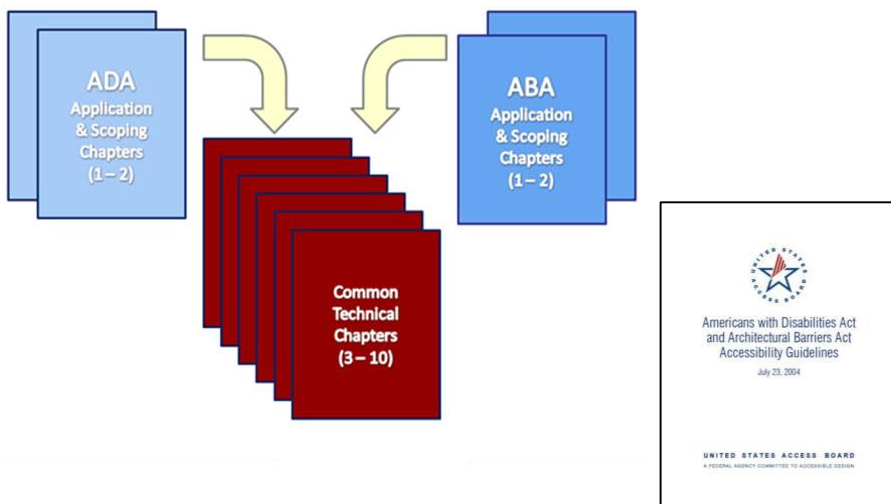
**DOJ Issued
2010 ADA
Standards**

**Based on Board's
ADA-ABA
Guidelines (2004)**



15

2004 ADA-ABA Guidelines



16

Examples of Covered Facilities



- Hospitals, Rehabilitation Facilities, Psychiatric Facilities and Detoxification Facilities



- Long-term Care Facilities

17

Examples of Covered Facilities



- Medical units in detention and correctional facilities

18

Employee Work Area

“All or any portion of a space used only by employees and used only for work. Corridors, toilet rooms, kitchenettes and break rooms are not employee work areas.” (106.5 and F106.5)

ADA

approach, enter, and exit

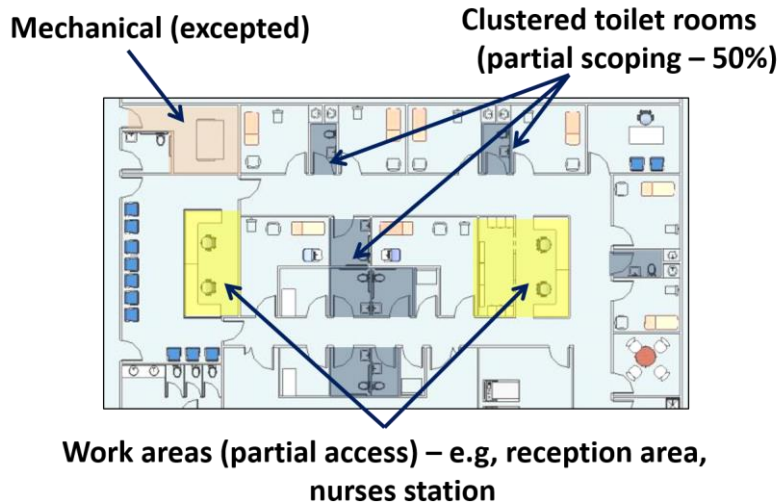
ABA

accessible

19

New Construction - ADA

Example: Medical Care Suite



20

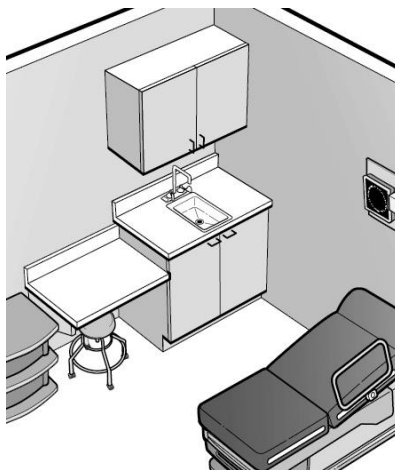
Employee Work Areas

Controls and fixtures used by staff and students – university teaching hospital



21

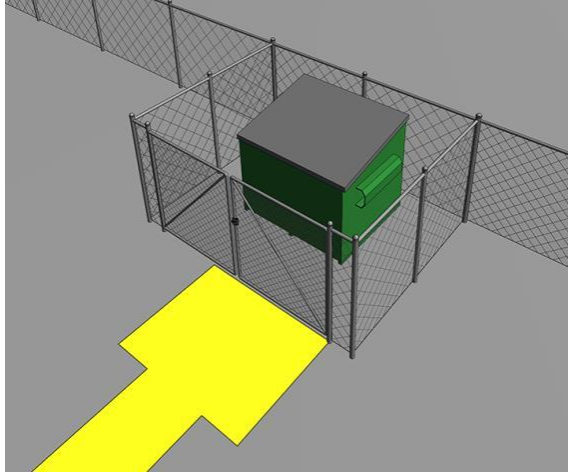
Employee Work Areas



**Requirements for
hand wash sinks in
exam rooms**

22

Employee Work Areas



Trash Enclosures and Dumpsters

23

Patient Sleeping Rooms

- **223.2 - Hospitals, Rehabilitation Facilities, Psychiatric Facilities and Detoxification Facilities:**

Conditions Affecting Mobility

- Specializing **100%**
 - Not specializing **10%**
- **223.3 Long-term care: 50%**

24

Patient Sleeping Rooms Dispersion

Medical Care Facilities Covered by 2010 ADA Standards

**“Proportionate” by type of medical
specialty – sections 35.151(h) and
36.406(g) incorporated by DOJ**

Long-term Care

**By type of room e.g. private, shared,
congregate space**

25

Patient Sleeping Rooms Alterations and Additions

**Based on the number
altered or added until
overall number reached
– maintains dispersion**



26

Patient Sleeping Rooms Toilet Rooms

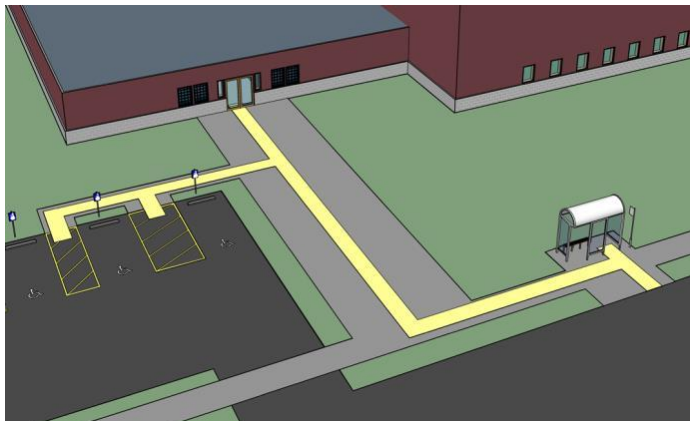
Those *serving* patient rooms
required to be accessible

- Exception for toilets
in critical care or
intensive care
patient rooms



27

Accessible Routes 206.2.1 Site Arrival Points



Sidewalks

28

Accessible Parking Scoping

- **Hospital: 10 % of spaces**
- **Rehabilitation and Outpatient Physical Therapy Facilities: 20 %**

29

Accessible Parking Scoping

- **Doctor's Offices: use table**
- **Medical Equipment Facilities: use table**

Table 208.2 Parking Spaces	
Total Number of Parking Spaces Provided in Parking Facility	Minimum Number of Required Accessible Parking Spaces
1 to 25	1
26 to 50	2
51 to 75	3
76 to 100	4
101 to 150	5
151 to 200	6
201 to 300	7
301 to 400	8
401 to 500	9
501 to 1000	2 percent of total
1001 and over	20, plus 1 for each 100, or fraction thereof, over 1000

30

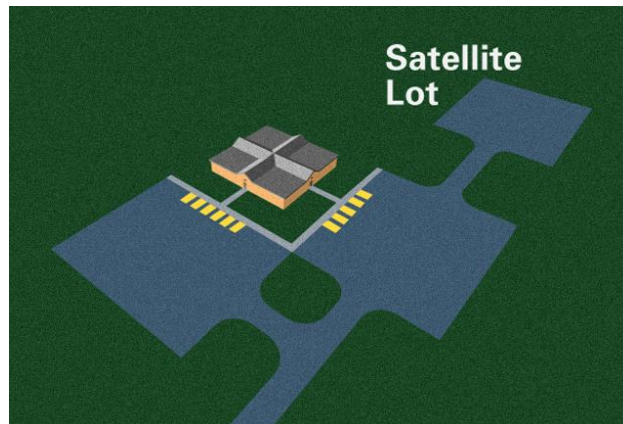
Accessible Parking Scoping



hospital campus with multiple occupancies
and tenants sharing parking lots

31

Accessible Parking



208.3 Location – Exception 2

32

Entrances



**206.4.1
Public Entrances:
60%**

**206.4.5
Tenant Spaces:
at least one
entrance**

33

Handrails on Walking Surfaces

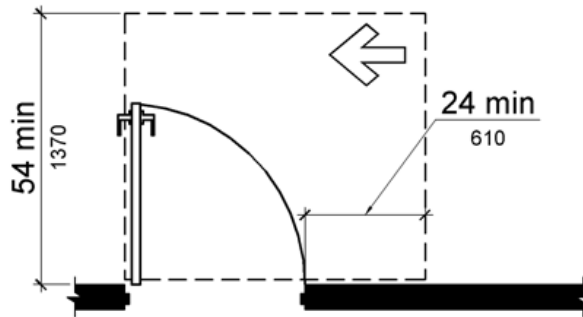


403.6 Handrails

34

Doors – 404.2.4 Exception

Entry doors to hospital patient rooms not required to provide the clearance beyond the latch side of the door.



35

Doors – 404.2.4 Exception



**Minimum space for positioning/
maneuvering**

36

Doors – 404.2.4 Exception

Accessible door

- Exception: latch side clearance at *hospital* patient room doors



37

Doors – Latch Side Clearance

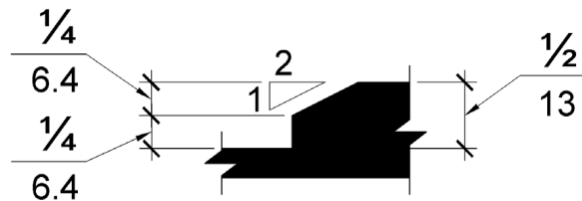


**404.2.4 Maneuvering Clearances
must not be obstructed
ADA regulations to maintain accessible features**

38

Doors – Threshold

303 Changes in Level



Only first $\frac{1}{4}$ inch from floor or ground may be vertical

Thresholds for transfer Showers (36" X 36") are permitted to be $\frac{1}{2}$ inch max. vertical – 608.7

39

Doors

Means of Egress



404.2.9 Door and Gate Opening Force

Fire doors must have a minimum opening force allowable by the appropriate administrative authority

Other than fire doors:

Interior hinged doors and gates - 5 lbs max.

Sliding or folding doors - 5 lbs max.

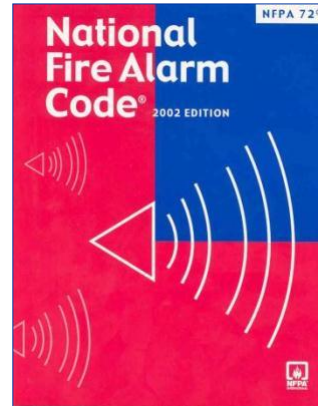
40

Fire Alarms Systems

702.1 General - NFPA 72

NFPA 72 National Fire Alarm Code (1999 or 2002)
– referenced standard

National Fire Protection Association
(www.nfpa.org)



41

Fire Alarms Systems

702.1 - Medical Facilities



EXCEPTION: Fire alarm systems in medical care facilities permitted to be provided in accordance with industry practice

42

Facilities for Children's Use

Elements designed specifically for use by children 12 and younger.

- Drinking fountains (§602)
 - Water closets and toilet compartments (§604)
 - Lavatories and sinks (§606) and
 - Dining and work surfaces (§902).
- Advisory notes on children's reach ranges (§301.1) and ramp handrails (§505.4)



43

Children's Toilets

Alternate Specifications:

- WC centerline 12" – 18"
- WC seat height 11" – 17"
- Grab bar height 18" – 27"
- Dispenser height 14" – 19"

44

Children's Toilets

Advisory information provides guidance
according to age group - 604.9

	Ages 3 & 4	Ages 5 - 8	Ages 9 - 12
WC Centerline	12 in	12 - 15 in	15 - 18 in
Toilet Seat Height	11 - 12 in	12 - 15 in	15 - 17 in
Grab Bar Height	18 - 20 in	20 - 25 in	25 - 27 in
Dispenser Height	14 in	14 - 17 in	17 - 19 in

45

Children's Lavatories

Exceptions based on age of intended users

Ages 6 - 12:

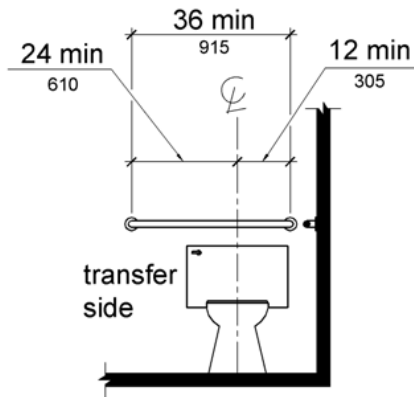
24" high min. knee clearance allowed
(if lav 31" high max.)

Ages 5 and under:

Side approach permitted

46

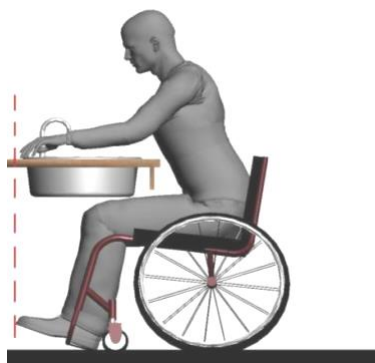
Bed Pan Washers at Toilets



Rear grab bar must not be obstructed

47

Scrub Sinks for Visitors



Sinks used by public covered, 5% of each type – Sections 212 and 606

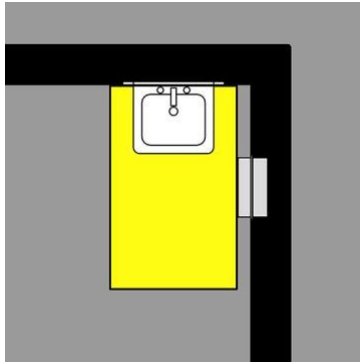


“Touchless” faucet with automatic sensor

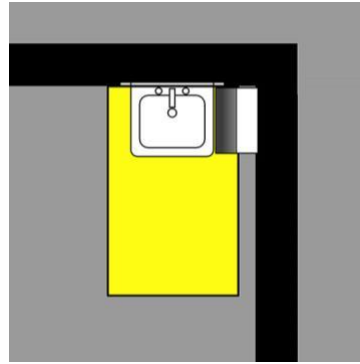
48

Dispensers

Clear Floor Space - 309.2



**Recessed dispenser
mounted to side – does not
overlap clear floor space**

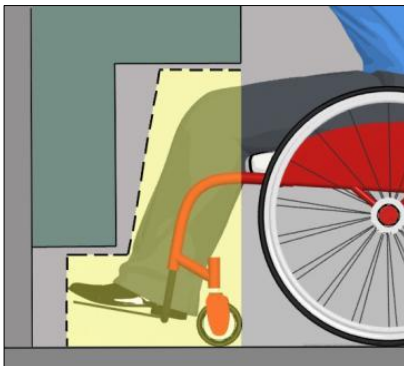


**Surface mounted dispenser
mounted over toe and knee
space**

49

Dispensers

Clear Floor Space - 309.2



**Toe and knee space may
be used**



**If above 27", cannot
protrude more that 4"**

50

Protruding Objects 204 and 307



- Flag signs used in medical settings cannot protrude into circulation paths more than 4" unless above 80"

51

Tactile Characters Installation Height/Location

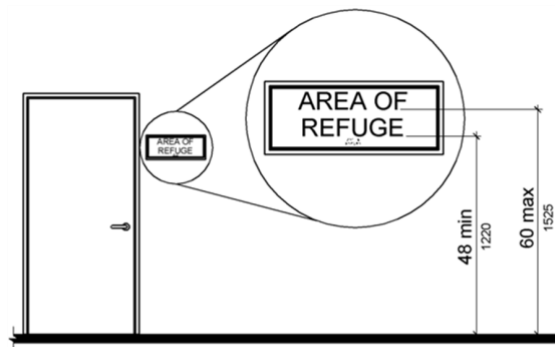
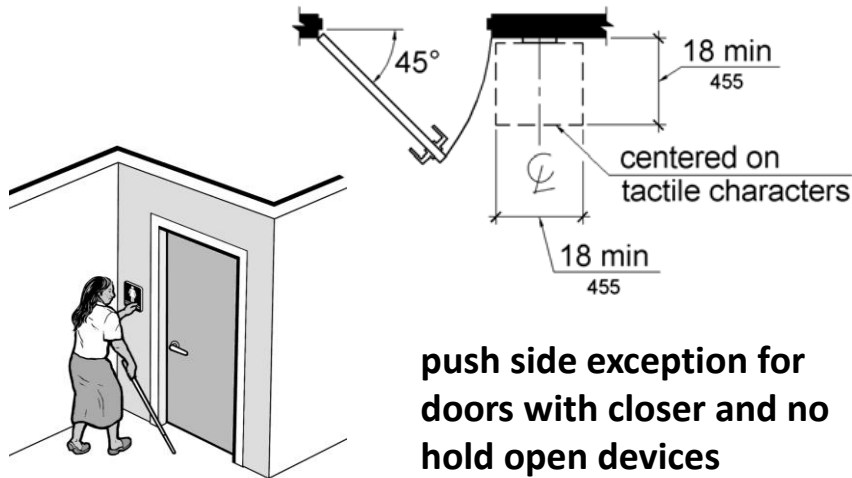


Figure 703.4.1
Height of Tactile Characters Above
Finish Floor or Ground

52

Location – 703.4

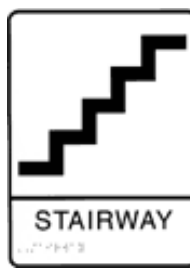


53

Pictograms (Tactile Signs)

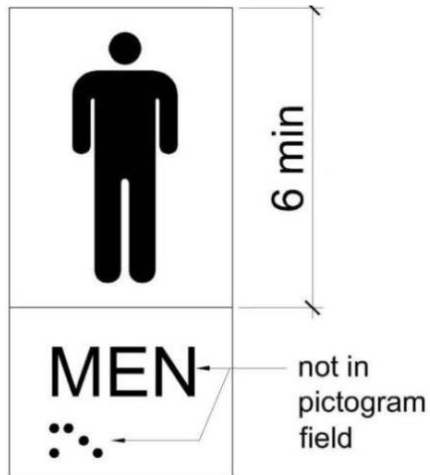
Pictograms used to
label permanent spaces (216.2)

- Where pictogram provided
- Not to informational/ directional pictograms



54

Pictograms -703.6



55

Pictograms

examples of informational/directional



No food
or drink



56

TTY's

217.4.6 - Public *pay* telephones

Where provided at hospital emergency room, recovery room, or waiting room – at least one TTY



57

Audiology Sound Booth

Audiology sound booths installed in a hospital or clinic covered by the Standards

- Accessible route
- Maneuvering clearances for doors
- Clear floor space and operable parts



58

Nurses' Work Station

Public side covered as a service counters (227.3 and 904.4) – accessible portion of counter

Nurse staff side is employee work area (203.9) – approach enter and exit – accessible under ABA



59

Examples of Sales and Service Counters

- Information and reception counters
- Registration
- Billing, including teller windows
- Pharmacy
- Cafeteria
- Gift shops
- Nursing stations

60

Sales and Service Counters

227.3 and 904.4

Scope Requirements

- **at least one of each type**
- **dispersion**
- **technical provision same for all counters type - with and without cash registers**

61

Sales and Service Counters

227.3 and 904.4

Technical Requirements

- **parallel or forward approach**
- **length and height of accessible portion of counter**
- **forward approach must have knee and toe space**

62

Folding Chart Tables and File Holders



**Must not be protruding
objects - 204 and 307**

63

Proposed Standards for Accessible Medical Diagnostic Equipment (MDE)

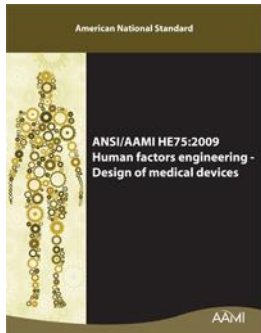
64

MDE - Background

- **Section 4203 of Patient Protection and Affordable Care Act**
– (Public Law 111-148, 124 Stat. L. 119)
- **Added Section 510 to the Rehabilitation Act of 1973 on March 23, 2010**
- **Title: “ESTABLISHMENT OF STANDARDS FOR ACCESSIBLE MEDICAL DIAGNOSTIC EQUIPMENT”**

65

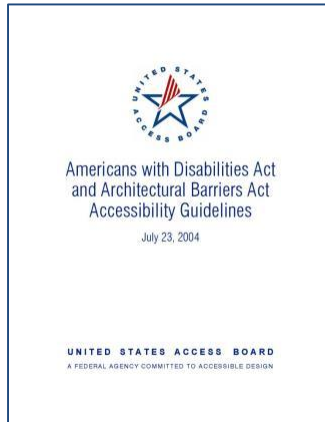
MDE - Background



- **ANSI/AAMI HE75 – 2009 Human Factors Engineering – Design of Medical Devices**
- **Chapter 16 – Accessibility Considerations**

66

MDE - Background

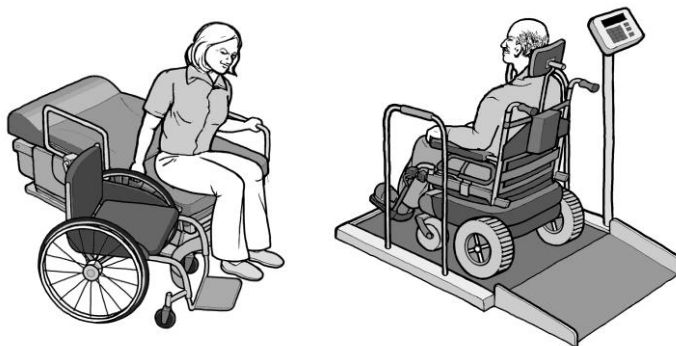


ADA and ABA Accessibility Guidelines

67

Equipment for Children's Use

Technical criteria are based on adult dimensions and anthropometrics, use of medical equipment by children not addressed in proposed rule.



68

Proposed Organization of Standards

- M1 Application and Administration
- M2 Scoping Requirements
- M3 Technical Criteria
 - Supine, Prone, or Side Lying Position
 - Seated Position
 - Seated in Wheelchair
 - Standing Position
 - Communication
 - Operable Parts

69



**Supine, prone, or
side-lying position - M301**



Seated position - M302

70



Seated in a wheelchair - M303



Standing position - M304

71

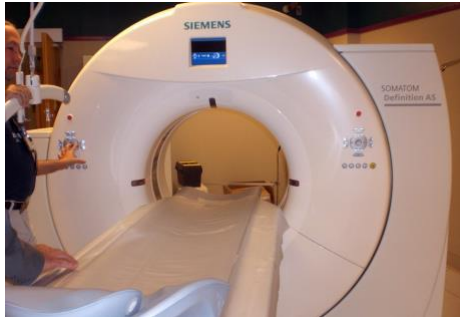
Technical Criteria

- **Supports - M305**



.2

Technical Criteria Across Equipment Types



- **Communication
M306**
- **Operable Parts
M307**

73

Advisory Committee Recommendations

- **55 recommendations made**
- **9 issue areas**
- **Final report**



<http://www.access-board.gov/guidelines-and-standards/health-care/about-this-rulemaking/advisory-committee-final-report>

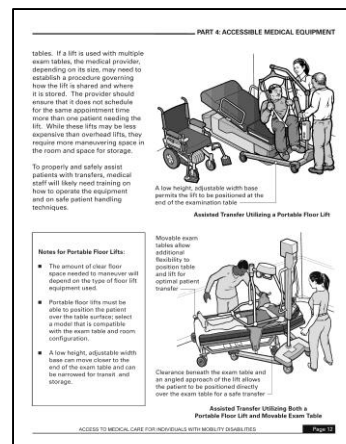
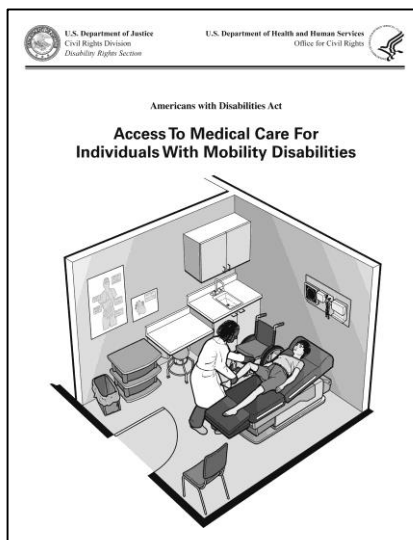
74

MDE - NPRM Steps

- Comment Period
- Public Hearings
- Advisory Committee
- Final Rule

75

DOJ Guidance is Available



www.ada.gov

76

Questions?

You May Type and Submit questions in the Chat Area Text Box or press Control-M and enter text in the Chat Area

77



U.S. Access Board

(800) 872-2253 (voice)

(800) 993-2822 (TTY)

E-mail: ta@access-board.gov

www.access-board.gov

"Advancing Full Access and Inclusion for All"

78

**Thank you for participating
in today's webinar**



Next session: February 5, 2015

Accessible Play Areas - "Advanced Session"

2:30 pm – 4:00 pm

www.accessibilityonline.org

(877) 232-1990 (v/TTY)

79



Continuing Education

AIA Provider Number: I017

LA CES Provider Name: Great Lakes ADA Center

AICP Provider Name: Great Lakes ADA Center

Course Title: Accessible Hospital and Medical Care Facilities-Advanced Session

Course Number: GL201501048

Date: January 8, 2015

Credits earned on completion of this course will be reported to **AIA CES** for AIA members and **LA CES** for those with an LA number. Certificates of Completion are available upon request.

This course is registered with **AIA, LA CES, and AICP** for continuing professional education. As such, it does not include content that may be deemed or construed to be an approval or endorsement by the professional organizations of any material of construction or any method or manner of handling, using, distributing, or dealing in any material or product.

Questions will be addressed at the conclusion of this presentation.



80